

\$160,000 - 207 10149 83 Avenue, Edmonton

MLS® #E4428946

\$160,000

1 Bedroom, 1.00 Bathroom, 612 sqft

Condo / Townhouse on 0.00 Acres

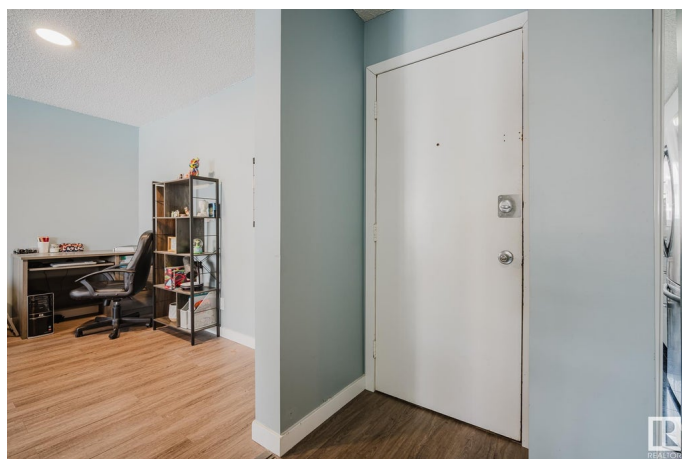
Strathcona, Edmonton, AB

Welcome to this charming one-bedroom, one-bath condo located in the heart of Strathcona! Perfectly situated for convenience, this home is just minutes away from the University of Alberta, local schools, Whyte Ave Shopping, Saturday Farmers Markets and all the essentials. Inside, you'll find a sleek kitchen that flows seamlessly into a cozy living room, creating the ideal space for relaxation. The sliding glass doors lead to a large balcony, bringing in plenty of natural light to brighten your space. The generously sized bedroom offers ample storage, while the four-piece bathroom provides everything you need. Additional perks include laundry facilities conveniently located within the building. Don't miss out on this wonderful blend of comfort and convenience – a perfect place to call home!

Built in 1971

Essential Information

| | |
|----------------|-----------|
| MLS® # | E4428946 |
| Price | \$160,000 |
| Bedrooms | 1 |
| Bathrooms | 1.00 |
| Full Baths | 1 |
| Square Footage | 612 |
| Acres | 0.00 |



| | |
|------------|------------------------|
| Year Built | 1971 |
| Type | Condo / Townhouse |
| Sub-Type | Lowrise Apartment |
| Style | Single Level Apartment |
| Status | Active |

Community Information

| | |
|-------------|---------------------|
| Address | 207 10149 83 Avenue |
| Area | Edmonton |
| Subdivision | Strathcona |
| City | Edmonton |
| County | ALBERTA |
| Province | AB |
| Postal Code | T6E 2C5 |

Amenities

| | |
|----------------|---|
| Amenities | Parking-Plug-Ins, Smart/Program. Thermostat |
| Parking Spaces | 1 |
| Parking | Stall |

Interior

| | |
|--------------|--|
| Appliances | Microwave Hood Fan, Refrigerator, Stove-Electric, Window Coverings |
| Heating | Hot Water, Natural Gas |
| # of Stories | 4 |
| Stories | 4 |
| Has Basement | Yes |
| Basement | None, No Basement |

Exterior

| | |
|-------------------|---|
| Exterior | Wood, Brick |
| Exterior Features | Flat Site, Playground Nearby, Schools, Shopping Nearby, See Remarks |
| Roof | Tar & Gravel |
| Construction | Wood, Brick |
| Foundation | Concrete Perimeter |

School Information

| | |
|------------|------------------------|
| Elementary | King Edward Elementary |
| Middle | Academy at King Edward |
| High | Mill Creek School |

Additional Information

| | |
|----------------|-----------------|
| Date Listed | April 3rd, 2025 |
| Days on Market | 17 |
| Zoning | Zone 15 |
| Condo Fee | \$390 |

DATA IS DEEMED RELIABLE BUT IS NOT GUARANTEED ACCURATE BY THE REALTORS® ASSOCIATION OF EDMONTON. COPYRIGHT 2025 BY THE REALTORS® ASSOCIATION OF EDMONTON. ALL RIGHTS RESERVED.Trademarks are owned or controlled by the Canadian Real Estate Association (CREA) and identify real estate professionals who are members of CREA (REALTOR®, REALTORS®) and/or the quality of services they provide (MLS®, Multiple Listing Service®)

Listing information last updated on April 20th, 2025 at 6:02pm MDT