

## **\$3,200,000 - 52073 Hwy 21, Rural Strathcona County**

MLS® #E4427723

**\$3,200,000**

5 Bedroom, 4.50 Bathroom, 2,824 sqft

Rural on 74.87 Acres

Greenwood Estates (Strathcona), Rural Strathcona County, AB

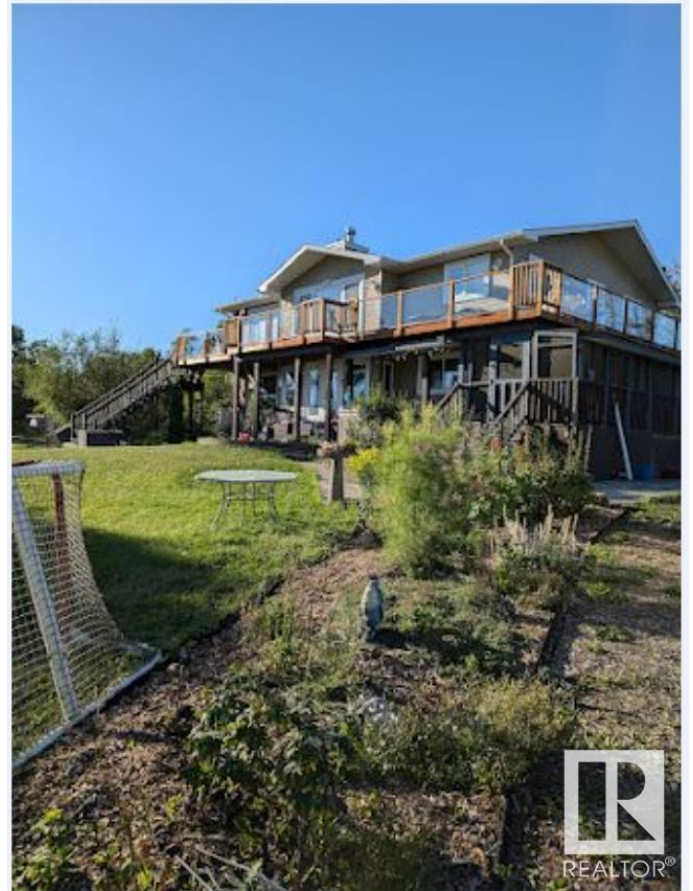
Visit the Listing Brokerage (and/or listing REALTOR®) website to obtain additional information. Main house two stories with above Grade Square Footage 2823. The upper floor serves as a separate living area and has two bedrooms, both with ensuite-the one off the master bedroom has a walk-in shower. It has an open concept kitchen and living room with a gas fireplace. Main floor has one bedroom with a walk-through closet into an ensuite washroom, open kitchen to dining room area with a fireplace, laundry room, and pantry. Garden Suite-1940â€™s house with about 1800 sq ft above ground and a partially finished basement. It has been renovated over the years including the installation of a tin roof and a new furnace. It has 5 bedrooms and one washroom. Modular home-moved on the east end of the property in 2000 with an addition added four years later. About 1800 square feet with two bathrooms and 5 bedrooms. Other structures,5000 square foot quonset with about half the floor concrete. 2 shops each about 1500 sqft.

Built in 1962

### **Essential Information**

MLS® # E4427723

Price \$3,200,000



Bedrooms	5
Bathrooms	4.50
Full Baths	4
Half Baths	1
Square Footage	2,824
Acres	74.87
Year Built	1962
Type	Rural
Sub-Type	Detached Single Family
Style	2 Storey
Status	Active

### **Community Information**

Address	52073 Hwy 21
Area	Rural Strathcona County
Subdivision	Greenwood Estates (Strathcona)
City	Rural Strathcona County
County	ALBERTA
Province	AB
Postal Code	T8B 1J4

### **Amenities**

Features	See Remarks
----------	-------------

### **Interior**

Interior Features	ensuite bathroom
Heating	Forced Air-2, Natural Gas
Fireplace	Yes
Stories	2
Has Basement	Yes
Basement	Full, Finished

### **Exterior**

Exterior	Wood
Exterior Features	Private Setting, Treed Lot, Waterfront Property, See Remarks
Construction	Wood
Foundation	Concrete Perimeter

### **Additional Information**

Date Listed March 26th, 2025  
Days on Market 17  
Zoning Zone 80



DATA IS DEEMED RELIABLE BUT IS NOT GUARANTEED ACCURATE BY THE REALTORS® ASSOCIATION OF EDMONTON. COPYRIGHT 2025 BY THE REALTORS® ASSOCIATION OF EDMONTON. ALL RIGHTS RESERVED. Trademarks are owned or controlled by the Canadian Real Estate Association (CREA) and identify real estate professionals who are members of CREA (REALTOR®, REALTORS®) and/or the quality of services they provide (MLS®, Multiple Listing Service®)

Listing information last updated on April 12th, 2025 at 12:32am MDT