

# \$549,900 - 3853 Chrustawka Place, Edmonton

MLS® #E4422910

**\$549,900**

3 Bedroom, 2.50 Bathroom, 1,663 sqft

Single Family on 0.00 Acres

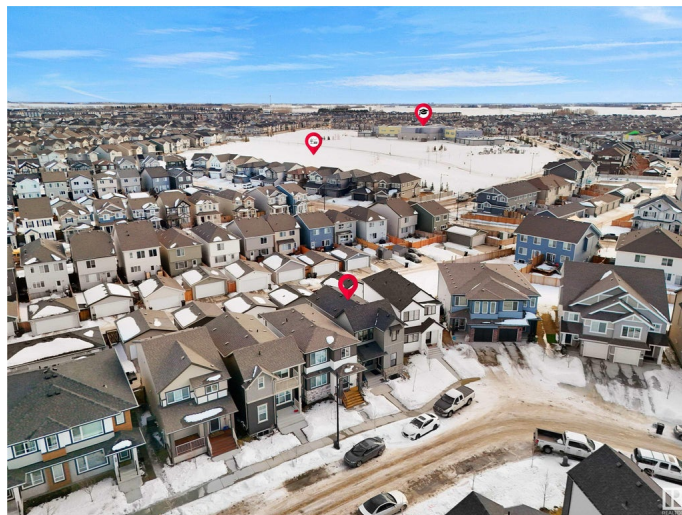
Chappelle Area, Edmonton, AB

Discover Your Dream Home in Chapelle!  
Welcome to your beautiful oasis in the heart of Southwest Edmonton! This stunning home is perfect for families seeking comfort, style, and convenience. Spacious Living: Enjoy 3 generous bedrooms and a bonus room, providing plenty of space for relaxation and entertainment. - Modern Comfort: With 2.5 beautifully designed bathrooms, morning routines just got a whole lot easier! - Bright & Airy Basement: Featuring 9-foot ceilings and two windows, the basement offers endless possibilities â€“ create your dream space or a cozy retreat. - Convenient Side Entrance: Ideal for potential suite development or easy access for guests. - Fully Fenced & Landscaped: Your private sanctuary awaits! Enjoy outdoor living in a beautiful yard, perfect for gatherings or quiet evenings under the stars. you'll experience a vibrant neighbourhood with parks, shopping, and schools just moments away.

Built in 2023

## Essential Information

MLS® #	E4422910
Price	\$549,900
Bedrooms	3
Bathrooms	2.50



Full Baths	2
Half Baths	1
Square Footage	1,663
Acres	0.00
Year Built	2023
Type	Single Family
Sub-Type	Detached Single Family
Style	2 Storey
Status	Active

### **Community Information**

Address	3853 Chrustawka Place
Area	Edmonton
Subdivision	Chappelle Area
City	Edmonton
County	ALBERTA
Province	AB
Postal Code	T6W 4M9

### **Amenities**

Amenities	Ceiling 9 ft., 9 ft. Basement Ceiling
Parking	Double Garage Detached

### **Interior**

Interior Features	ensuite bathroom
Appliances	Dishwasher-Built-In, Dryer, Hood Fan, Oven-Microwave, Refrigerator, Stove-Gas, Washer
Heating	Forced Air-2, Natural Gas
Stories	2
Has Basement	Yes
Basement	Full, Unfinished

### **Exterior**

Exterior	Wood, Vinyl
Exterior Features	Airport Nearby, Fenced, Low Maintenance Landscape, Schools, Shopping Nearby, See Remarks
Roof	Asphalt Shingles
Construction	Wood, Vinyl
Foundation	Concrete Perimeter

## Additional Information

Date Listed February 26th, 2025

Days on Market 52

Zoning Zone 55

HOA Fees 440

HOA Fees Freq. Annually

DATA IS DEEMED RELIABLE BUT IS NOT GUARANTEED ACCURATE BY THE REALTORS® ASSOCIATION OF EDMONTON. COPYRIGHT 2025 BY THE REALTORS® ASSOCIATION OF EDMONTON. ALL RIGHTS RESERVED. Trademarks are owned or controlled by the Canadian Real Estate Association (CREA) and identify real estate professionals who are members of CREA (REALTOR®, REALTORS®) and/or the quality of services they provide (MLS®, Multiple Listing Service®)

Listing information last updated on April 19th, 2025 at 7:17pm MDT