

\$349,998 - 10 50 McLaughlin Drive, Spruce Grove

MLS® #E4420524

\$349,998

3 Bedroom, 2.50 Bathroom, 1,256 sqft
Condo / Townhouse on 0.00 Acres

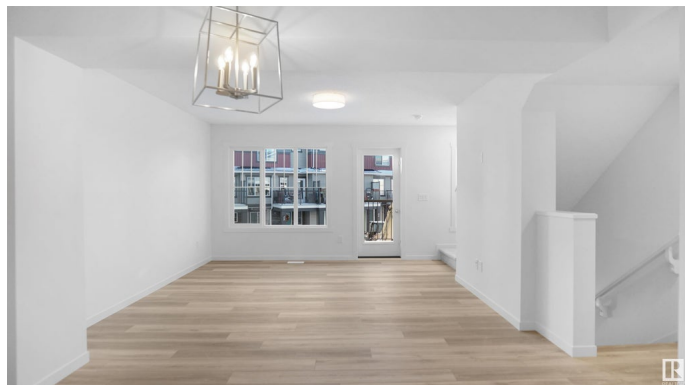
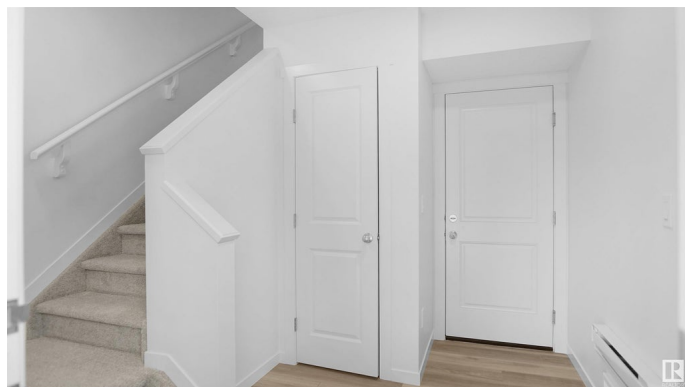
McLaughlin_SPGR, Spruce Grove, AB

Welcome to this brand new townhouse unit the "Harley" Built by StreetSide Developments and is located in one of Spruce Groves newest premier communities of McLaughlin. With almost 1260 square Feet, it comes with front yard landscaping and a double attached garage, this opportunity is perfect for a young family or young couple. Your main floor is complete with upgrade luxury Vinyl Plank flooring throughout the great room and the kitchen. Highlighted in your new kitchen are upgraded cabinets, upgraded counter tops and a tile back splash. Finishing off the main level is a 2 piece bathroom. The upper level has 3 bedrooms and 2 full bathrooms. *** Home is under construction and will be complete with in a couple of weeks the photos used are from the same exact style and colors may vary ****

Built in 2024

Essential Information

MLS® #	E4420524
Price	\$349,998
Bedrooms	3
Bathrooms	2.50
Full Baths	2
Half Baths	1
Square Footage	1,256



Acres	0.00
Year Built	2024
Type	Condo / Townhouse
Sub-Type	Townhouse
Style	2 Storey
Status	Active

Community Information

Address	10 50 McLaughlin Drive
Area	Spruce Grove
Subdivision	McLaughlin_SPGR
City	Spruce Grove
County	ALBERTA
Province	AB
Postal Code	T7X 0E1

Amenities

Amenities	See Remarks
Parking	Double Garage Attached

Interior

Interior Features	ensuite bathroom
Appliances	Garage Control, Garage Opener, See Remarks
Heating	Forced Air-1, Natural Gas
Stories	3
Has Basement	Yes
Basement	None, No Basement

Exterior

Exterior	Wood, Stone, Vinyl
Exterior Features	Golf Nearby, Landscaped, Park/Reserve, Playground Nearby, Public Swimming Pool, Public Transportation, Ravine View, Schools, Shopping Nearby, See Remarks
Roof	Asphalt Shingles
Construction	Wood, Stone, Vinyl
Foundation	Concrete Perimeter

Additional Information

Date Listed	February 5th, 2025
-------------	--------------------

Days on Market	66
Zoning	Zone 91
Condo Fee	\$156

DATA IS DEEMED RELIABLE BUT IS NOT GUARANTEED ACCURATE BY THE REALTORS® ASSOCIATION OF EDMONTON. COPYRIGHT 2025 BY THE REALTORS® ASSOCIATION OF EDMONTON. ALL RIGHTS RESERVED. Trademarks are owned or controlled by the Canadian Real Estate Association (CREA) and identify real estate professionals who are members of CREA (REALTOR®, REALTORS®) and/or the quality of services they provide (MLS®, Multiple Listing Service®)

Listing information last updated on April 12th, 2025 at 7:32am MDT