

# \$10,000 - Na Na, Edmonton

MLS® #E4419828

**\$10,000**

0 Bedroom, 0.00 Bathroom,  
Business on 0.00 Acres

Queen Alexandra, Edmonton, AB

This 1931 sqft COFFEE shop has new DESIGN and new reno. Located right on busy and HIGH traffic spot. Open concept with VIP room inside. You can put new kitchen at the back of the store. Or you can easy to change different menu. Subject to landlord approval. Close to U of A area. Reasonable rent and PRICE TO SELL.

## Essential Information

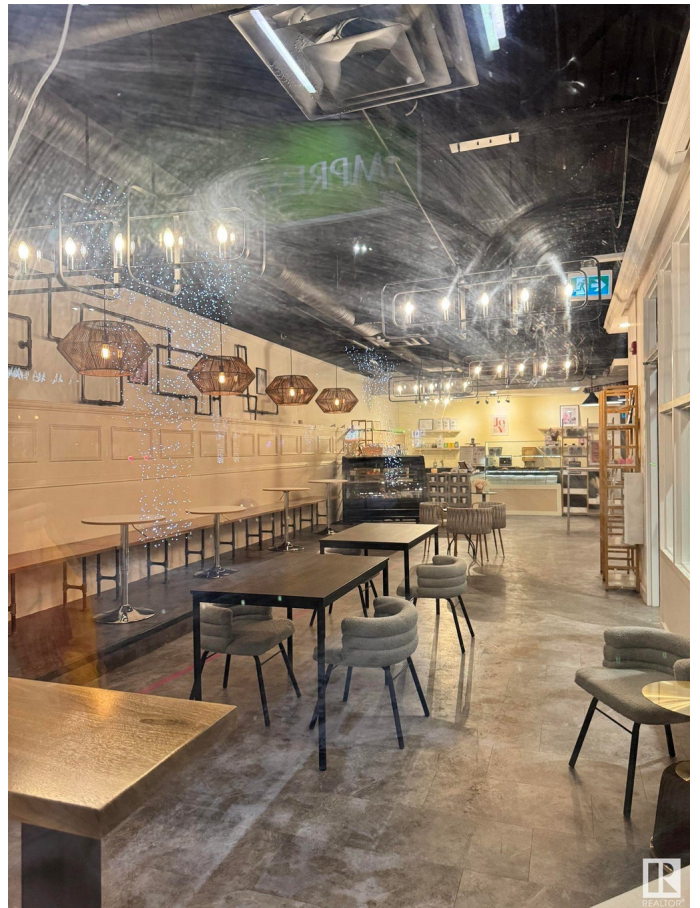
MLS® #	E4419828
Price	\$10,000
Bathrooms	0.00
Acres	0.00
Type	Business
Status	Active

## Community Information

Address	Na Na
Area	Edmonton
Subdivision	Queen Alexandra
City	Edmonton
County	ALBERTA
Province	AB
Postal Code	T6E 2B2

## Additional Information

Date Listed	January 31st, 2025
-------------	--------------------



Days on Market	69
Zoning	Zone 15

DATA IS DEEMED RELIABLE BUT IS NOT GUARANTEED ACCURATE BY THE REALTORS® ASSOCIATION OF EDMONTON. COPYRIGHT 2025 BY THE REALTORS® ASSOCIATION OF EDMONTON. ALL RIGHTS RESERVED. Trademarks are owned or controlled by the Canadian Real Estate Association (CREA) and identify real estate professionals who are members of CREA (REALTOR®, REALTORS®) and/or the quality of services they provide (MLS®, Multiple Listing Service®)

Listing information last updated on April 10th, 2025 at 8:17pm MDT