

## \$0 - 119 226 Mcleod Avenue, Spruce Grove

MLS® #E4415095

**\$0**

0 Bedroom, 0.00 Bathroom,  
Retail on 0.00 Acres

City Centre, Spruce Grove, AB

Street level retail opportunity! 1,468 sq. ft.  
open plan with 2 offices on new McLeod  
Avenue street plan. Good parking, Ready for  
quick move in!

Built in 1980

### Essential Information

MLS® #	E4415095
Bathrooms	0.00
Acres	0.00
Year Built	1980
Type	Retail
Status	Active

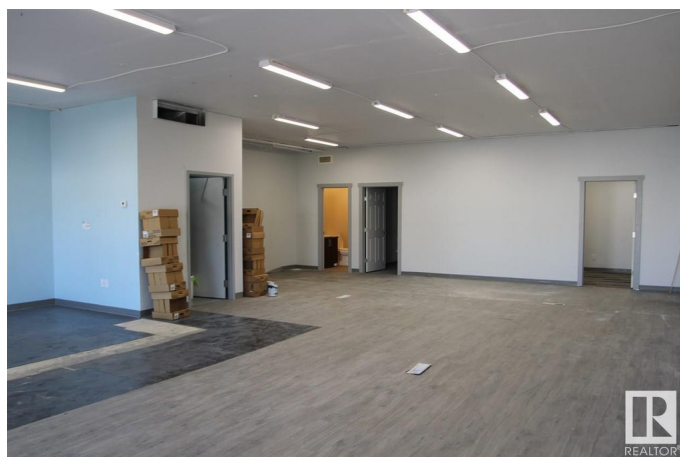
### Community Information

Address	119 226 Mcleod Avenue
Area	Spruce Grove
Subdivision	City Centre
City	Spruce Grove
County	ALBERTA
Province	AB
Postal Code	T7X 3X2

### Exterior

Exterior	Wood Frame
Construction	Wood Frame

### Additional Information



Date Listed            December 2nd, 2024

Days on Market      137

Zoning                Zone 91

DATA IS DEEMED RELIABLE BUT IS NOT GUARANTEED ACCURATE BY THE REALTORS® ASSOCIATION OF EDMONTON. COPYRIGHT 2025 BY THE REALTORS® ASSOCIATION OF EDMONTON. ALL RIGHTS RESERVED. Trademarks are owned or controlled by the Canadian Real Estate Association (CREA) and identify real estate professionals who are members of CREA (REALTOR®, REALTORS®) and/or the quality of services they provide (MLS®, Multiple Listing Service®)

Listing information last updated on April 18th, 2025 at 2:17pm MDT